

Empire's Design storyboards are a general representation of materials that will be installed. Please refer to lot specific Design documents and floor plans for final material selections and applicable locations.

NOTE: Supply chain issues outside of Empire's control may result in material reselections during the Construction process. Any reselections will be completed by the Empire Design Department.

— EVERYDAY —
BEAUTIFUL



NO. 05



Design Collection #5

Kitchen Selections



Cabinet Hardware:
Stanton Pull in Satin
Bronze

Cabinets:
Bryant Painted
Maritime (Perimeter), Stain Morel
(Island)



Backsplash:
MSI Capella White – 2x10

Countertops:
Silestone Quartz
Miami Vena



Faucet:
Moen Align in
Brushed Gold



Sink: Blanco Valea in White



Island
Pendants



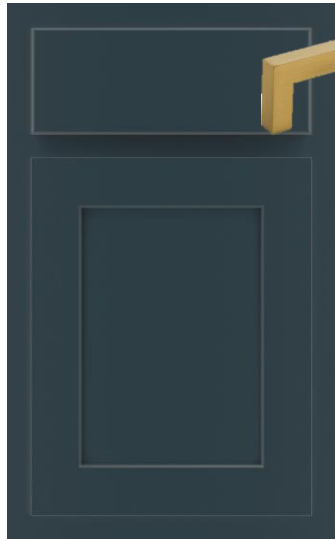
Whole House Paint – Incredible White



Shaw Luxury Vinyl Plank
Polaris Plus – Cinnamon Walnut

Design Collection #5

Owners Bath Selections



Cabinet Hardware:
Stanton Pull in Satin
Bronze

Cabinets:
Westburke Painted Maritime



Vanity Lights



Shower Walls:
MSI Capella White – 2x10



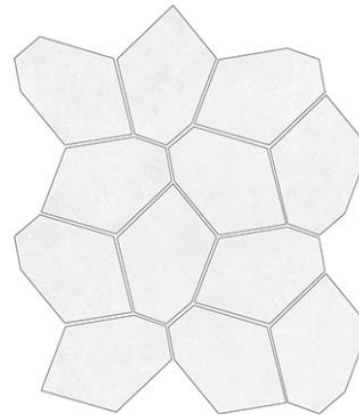
Whole House Paint – Incredible White



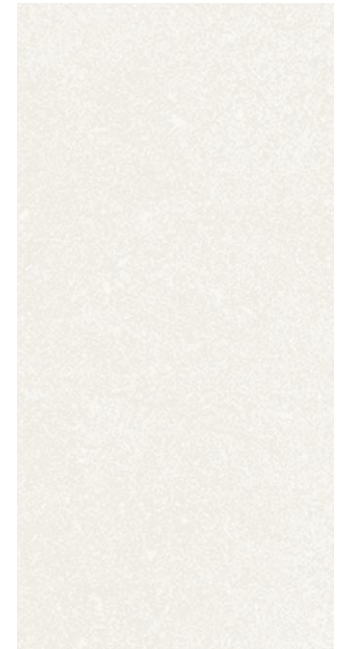
Countertops:
Silestone Quartz Miami Vena
Rectangular Sink(s)



Faucets:
Align Single Handle
in Brushed Gold



Shower Floor Tile:
Solutions GrandArt Mosaic in White



Floor Tile: Formation Ivory – 12x24

Design Collection #5

Secondary Bath Selections

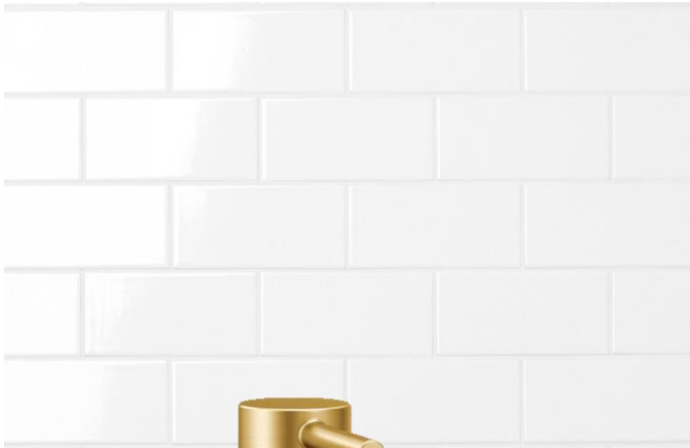


Cabinet Hardware:
Stanton Pull in Satin
Bronze

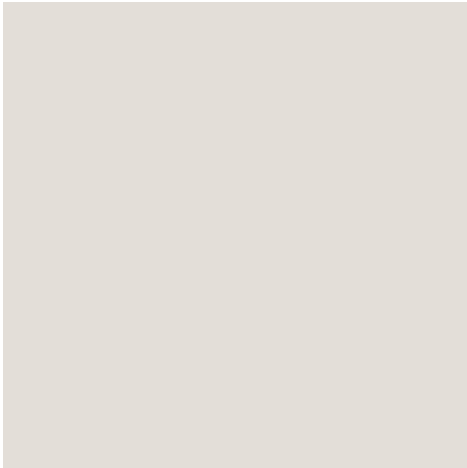
Cabinets:
Westburke Painted
Maritime



Vanity Light



Tub/Shower Walls:
3x6 Catch Ice Subway Tile



Whole House Paint – Incredible White



Countertops:
Solid White Cultured
Marble with
Rectangular Sink



Faucets:
Align Single Handle
in Brushed Gold



Shaw Luxury Vinyl Plank
Polaris Plus – Cinnamon Walnut

Design Collection #5

Additional Features



Stratus Knob in Satin Nickel



Family Room Ceiling Fan



Dining Room Light
(if applicable per plan)



Powder Room Light
(if applicable per plan)



Bedroom Light(s)
(per plan)