

SYDNEY 26' VILLAGE TOWN



STYLE A - 1,476 to 1,500 SQ.FT.



STYLE B - 1,547 to 1,559 SQ.FT.

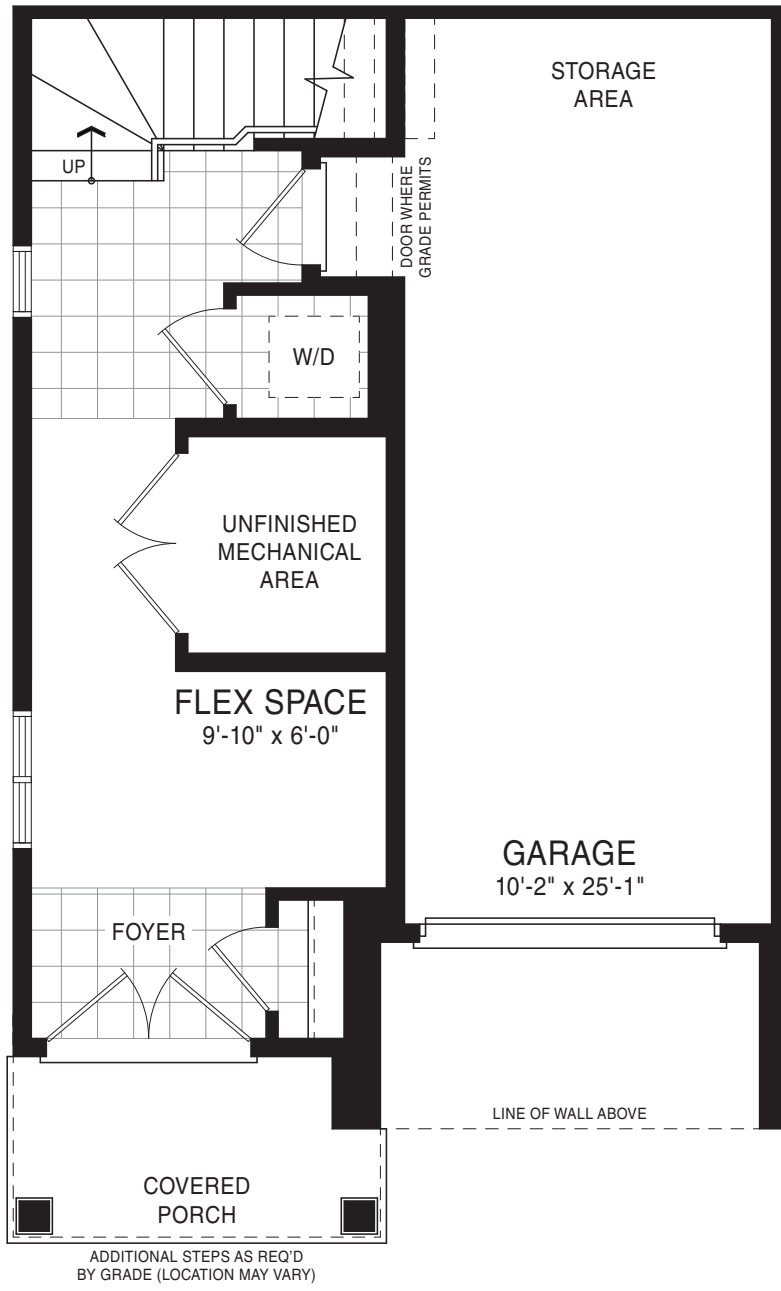


STYLE C - 1,534 to 1,559 SQ.FT.

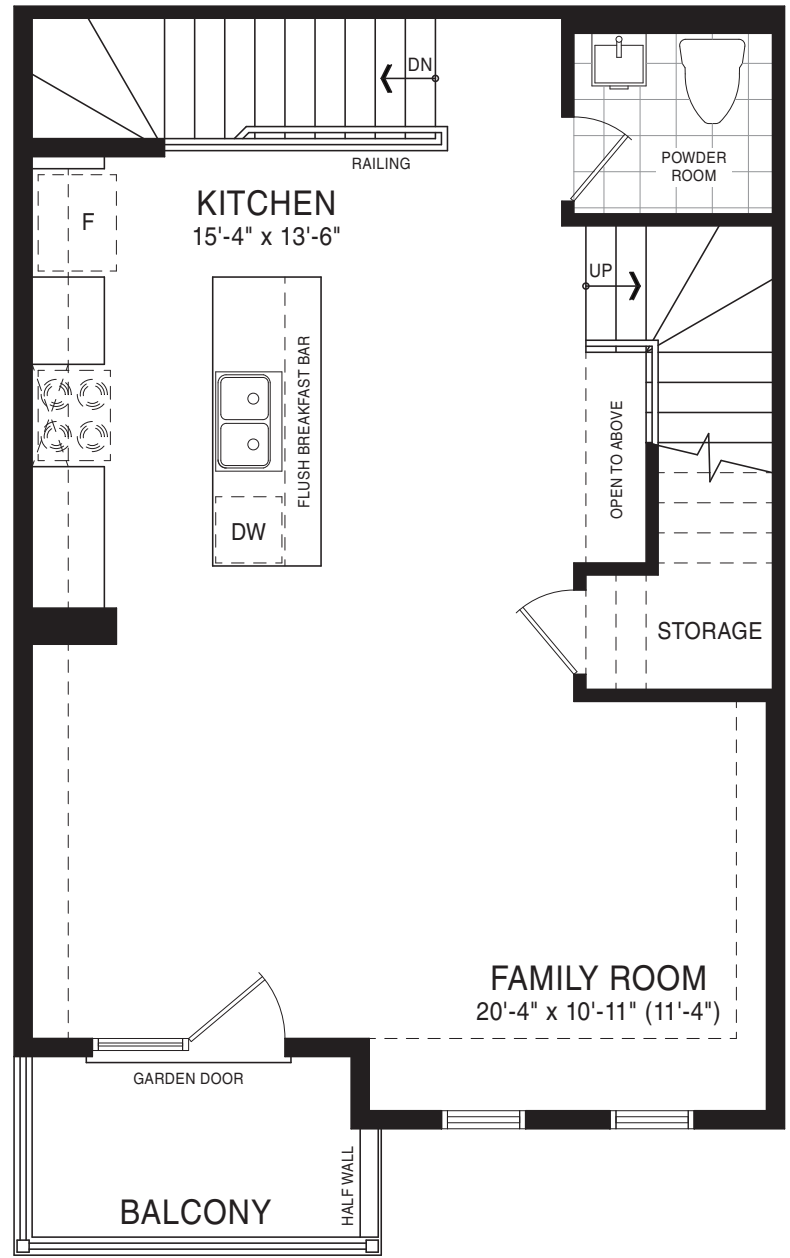
SYDNEY 26' VILLAGE TOWN

STYLE A1 - 1,500 SQ.FT.
 STYLE A2 - 1,476 SQ.FT.
 STYLE A3 - 1,476 SQ.FT.
 STYLE B1 - 1,547 SQ.FT.

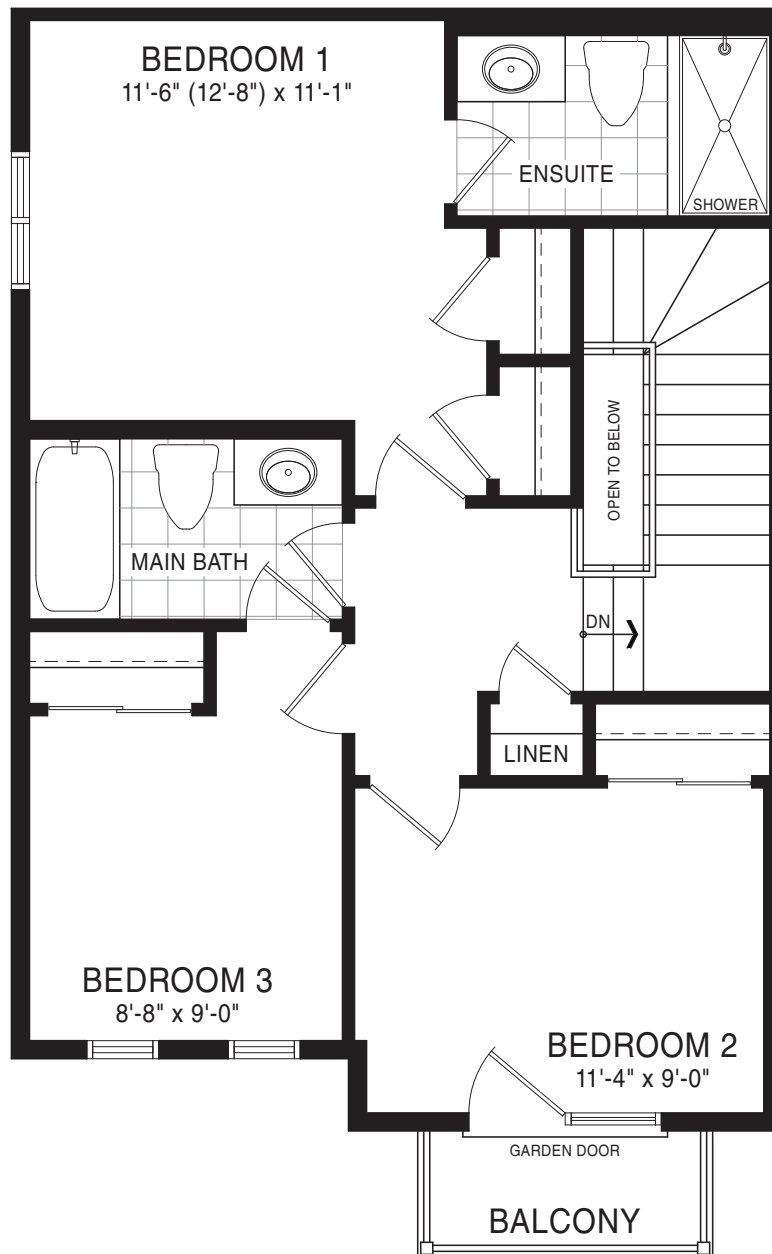
STYLE B2 - 1,559 SQ.FT.
 STYLE C1 - 1,559 SQ.FT.
 STYLE C2 - 1,534 SQ.FT.
 STYLE C3 - 1,534 SQ.FT.



GROUND FLOOR PLAN
 STYLE A



SECOND FLOOR PLAN
 STYLE A



THIRD FLOOR PLAN
 STYLE A